



WeCare Wellness Services Trust

Support At Home

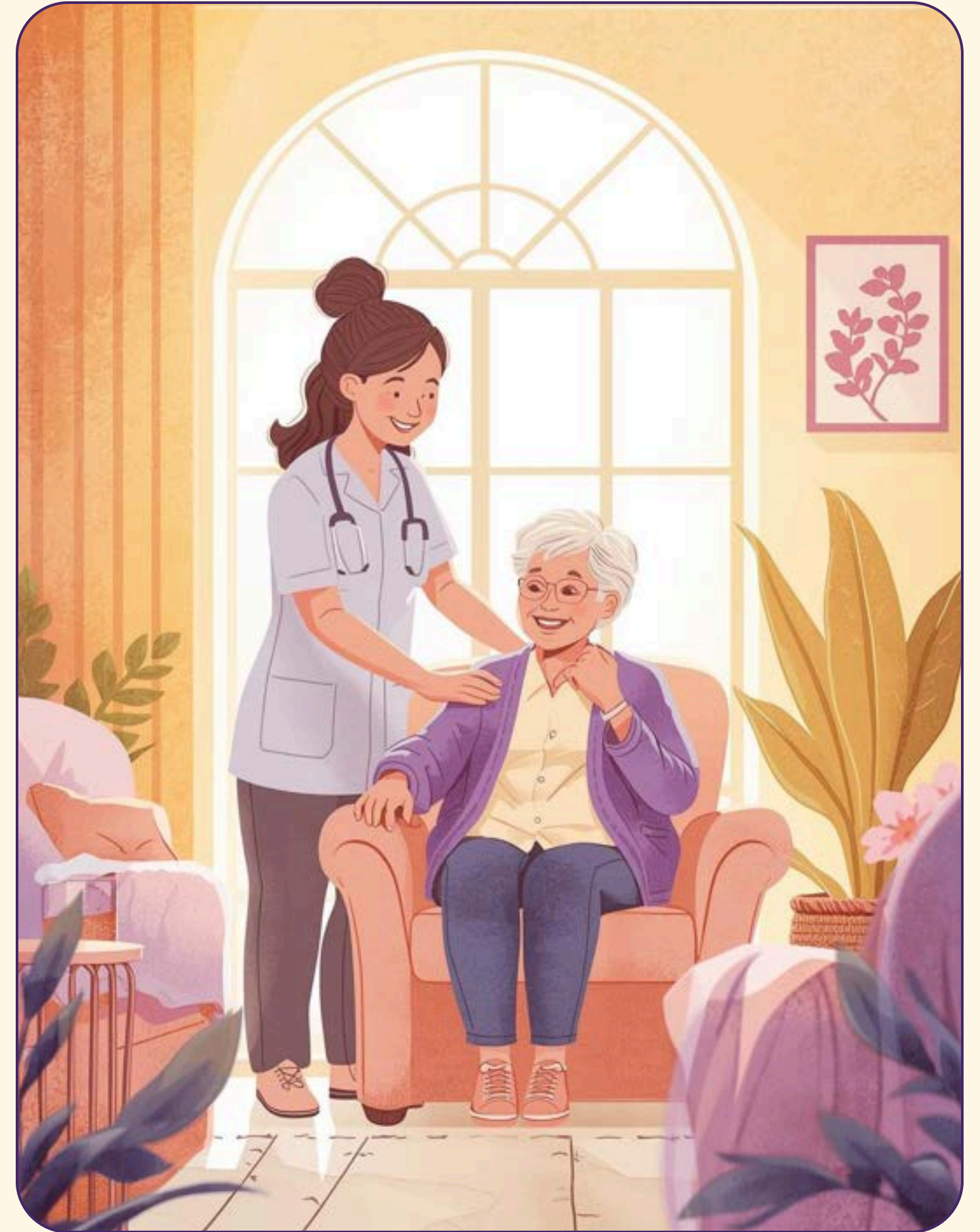
Fee Schedule

Effective from 01 Nov 2025

Our Commitment

WeCare are dedicated to providing **compassionate support** and care for our participants, ensuring their well-being and happiness.

In this brochure you will find an overview of the Support at Home services we offer and rates for **clinical supports, independence, everyday living,** and **care management.**



WeCare Wellness Services

Talk to us today



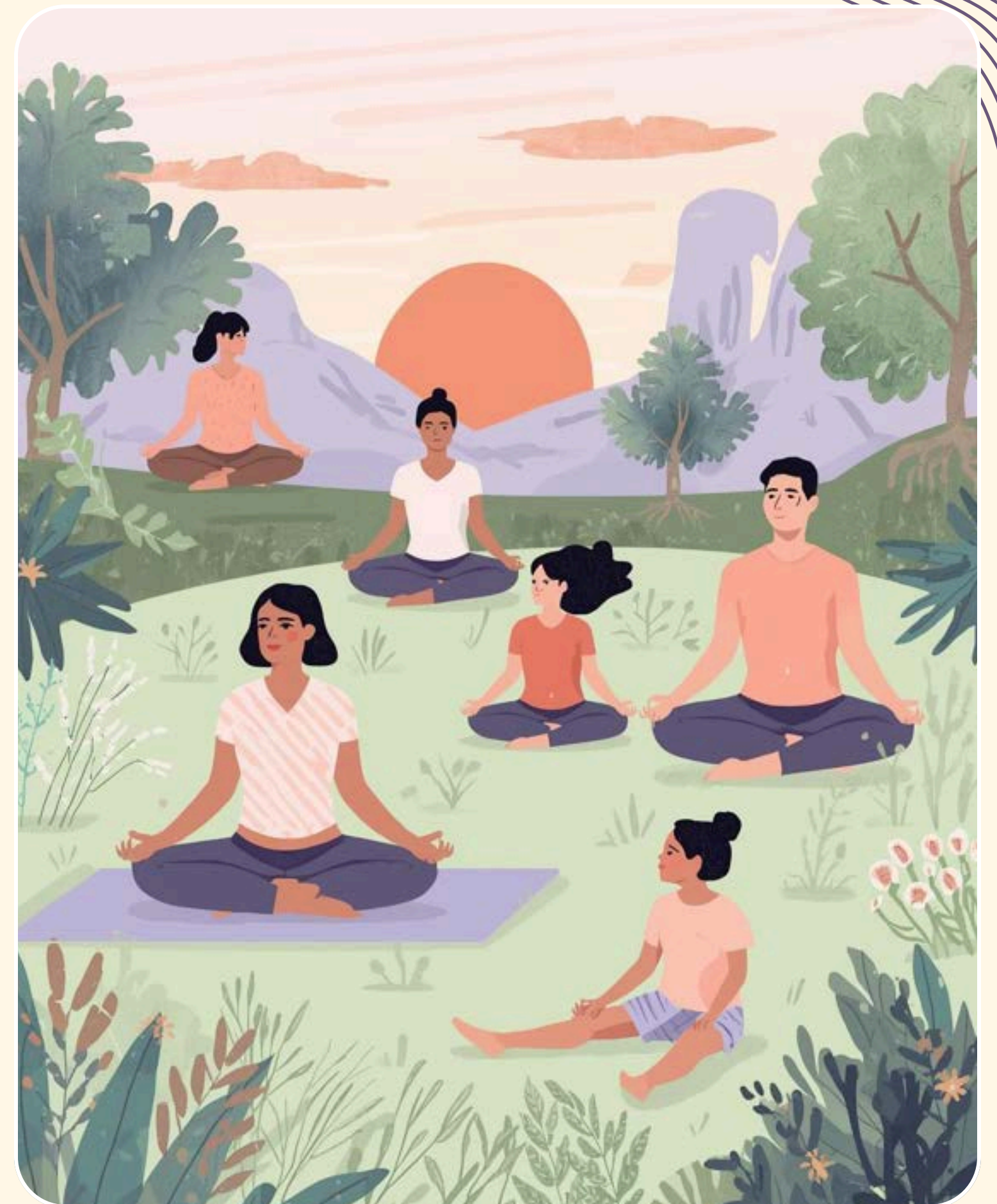
02 7252 2330



info@wecarewellness.com.au



www.wecarewellness.com.au



Our Holistic Support at Home Services



Clinical Supports

Health-oriented services delivered by qualified professionals to protect or restore your wellbeing and manage clinical risks.



Independence

Practical support to help you maintain everyday skills, stay connected, and live as independently as possible.



Everyday Living

Services that lighten the load of daily household tasks so your living environment is safe, comfortable, and manageable.

Clinical Supports



**Allied Health &
Therapeutic Services**



Nursing Care



Care Management

Allied Health & Therapeutic Services

Services	Mon-Fri (8am-6pm)	Mon-Fri (After Hours)	Saturday	Sunday	Public Holiday	Unit
Dietician or Nutritionist	\$228.00 Min: \$180.00 Max: \$268.00	\$228.00 Min: \$180.00 Max: \$268.00	\$228.00 Min: \$180.00 Max: \$268.00	\$228.00 Min: \$180.00 Max: \$268.00	\$228.00 Min: \$180.00 Max: \$268.00	Per Hour
Dietician/Nutritionist - Telehealth	\$228.00 Min: \$180.00 Max: \$268.00	\$228.00 Min: \$180.00 Max: \$268.00	\$228.00 Min: \$180.00 Max: \$268.00	\$228.00 Min: \$180.00 Max: \$268.00	\$228.00 Min: \$180.00 Max: \$268.00	Per Hour
Exercise Physiologist	\$228.00 Min: \$180.00 Max: \$268.00	\$228.00 Min: \$180.00 Max: \$268.00	\$228.00 Min: \$180.00 Max: \$268.00	\$228.00 Min: \$180.00 Max: \$268.00	\$228.00 Min: \$180.00 Max: \$268.00	Per Hour
Occupational Therapist	\$228.00 Min: \$180.00 Max: \$268.00	\$228.00 Min: \$180.00 Max: \$268.00	\$228.00 Min: \$180.00 Max: \$268.00	\$228.00 Min: \$180.00 Max: \$268.00	\$228.00 Min: \$180.00 Max: \$268.00	Per Hour
Occupational Therapist - Telehealth	\$228.00 Min: \$180.00 Max: \$268.00	\$228.00 Min: \$180.00 Max: \$268.00	\$228.00 Min: \$180.00 Max: \$268.00	\$228.00 Min: \$180.00 Max: \$268.00	\$228.00 Min: \$180.00 Max: \$268.00	Per Hour
Physiotherapist	\$228.00 Min: \$180.00 Max: \$268.00	\$228.00 Min: \$180.00 Max: \$268.00	\$228.00 Min: \$180.00 Max: \$268.00	\$228.00 Min: \$180.00 Max: \$268.00	\$228.00 Min: \$180.00 Max: \$268.00	Per Hour
Podiatrist	\$228.00 Min: \$180.00 Max: \$268.00	\$228.00 Min: \$180.00 Max: \$268.00	\$228.00 Min: \$180.00 Max: \$268.00	\$228.00 Min: \$180.00 Max: \$268.00	\$228.00 Min: \$180.00 Max: \$268.00	Per Hour
Speech Pathologist	\$228.00 Min: \$180.00 Max: \$268.00	\$228.00 Min: \$180.00 Max: \$268.00	\$228.00 Min: \$180.00 Max: \$268.00	\$228.00 Min: \$180.00 Max: \$268.00	\$228.00 Min: \$180.00 Max: \$268.00	Per Hour





Services	Mon-Fri (8am-6pm)	Mon-Fri (After Hours)	Saturday	Sunday	Public Holiday	Unit
Registered Nurse	\$178.00 Min: \$138.00 Max: \$178.00	\$204.70 Min: \$158.70 Max: \$204.70	\$267.00 Min: \$207.00 Max: \$267.00	\$311.50 Min: \$241.50 Max: \$311.50	\$445.00 Min: \$345.00 Max: \$445.00	Per Hour
Registered Nurse - Telehealth	\$138.00 Min: \$138.00 Max: \$178.00	\$158.70 Min: \$158.70 Max: \$204.70	\$207.00 Min: \$207.00 Max: \$267.00	\$241.50 Min: \$241.50 Max: \$311.50	\$345.00 Min: \$345.00 Max: \$445.00	Per Hour





Services	Mon-Fri (8am-6pm)	Mon-Fri (After Hours)	Saturday	Sunday	Public Holiday	Unit
Care Management	\$120	\$138	\$180	\$210	\$300	Per Hour
Restorative Care Management	\$120	\$138	\$180	\$210	\$300	Per Hour



Independence



Personal Care



Respite



Therapeutic Services



**Social Support & Community
Engagement & Transport**

Personal Care

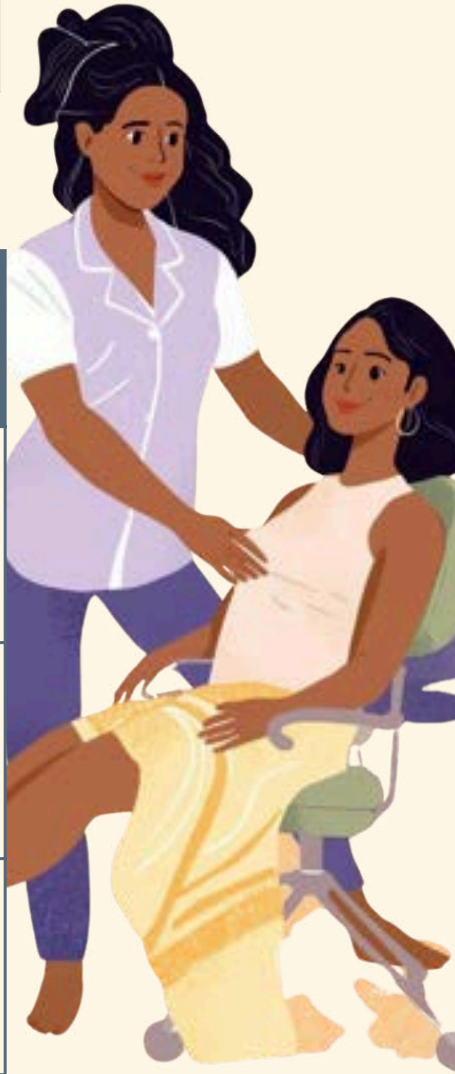
Services	Mon-Fri (8am-6pm)	Mon-Fri (After Hours)	Saturday	Sunday	Public Holiday	Unit
Personal Care	\$99.00 Min: \$79.00 Max: \$115.00	\$113.85 Min: \$90.85 Max: \$132.25	\$148.50 Min: \$118.50 Max: \$172.50	\$173.25 Min: \$138.25 Max: \$201.25	\$247.50 Min: \$197.50 Max: \$287.50	Per Hour Minimum 2 hours

Respite

Services	Mon-Fri (8am-6pm)	Mon-Fri (After Hours)	Saturday	Sunday	Public Holiday	Unit
Respite	\$99.00 Min: \$79.00 Max: \$115.00	\$113.85 Min: \$90.85 Max: \$132.25	\$148.50 Min: \$118.50 Max: \$172.50	\$173.25 Min: \$138.25 Max: \$201.25	\$247.50 Min: \$197.50 Max: \$287.50	Per Hour Minimum 2 hours

Therapeutic Services for Independent Living

Services	Mon-Fri (8am-6pm)	Mon-Fri (After Hours)	Saturday	Sunday	Public Holiday	Unit
Acupuncturist	\$180.00 Min: \$120.00 Max: \$220.00	\$180.00 Min: \$120.00 Max: \$220.00	\$180.00 Min: \$120.00 Max: \$220.00	\$180.00 Min: \$120.00 Max: \$220.00	\$180.00 Min: \$120.00 Max: \$220.00	Per Hour
Chiropractor	\$180.00 Min: \$120.00 Max: \$220.00	\$180.00 Min: \$120.00 Max: \$220.00	\$180.00 Min: \$120.00 Max: \$220.00	\$180.00 Min: \$120.00 Max: \$220.00	\$180.00 Min: \$120.00 Max: \$220.00	Per Hour
Remedial Massage	\$180.00 Min: \$120.00 Max: \$220.00	\$180.00 Min: \$120.00 Max: \$220.00	\$180.00 Min: \$120.00 Max: \$220.00	\$180.00 Min: \$120.00 Max: \$220.00	\$180.00 Min: \$120.00 Max: \$220.00	Per Hour



Social Support & Community Engagement

Services	Mon-Fri (8am-6pm)	Mon-Fri (After Hours)	Saturday	Sunday	Public Holiday	Unit
Individual Social Support	\$99.00 Min: \$79.00 Max: \$115.00	\$113.85 Min: \$90.85 Max: \$132.25	\$148.50 Min: \$118.50 Max: \$172.50	\$173.25 Min: \$138.25 Max: \$201.25	\$247.50 Min: \$197.50 Max: \$287.50	Per Hour Minimum 2 hours
Accompanied Activities	\$99.00 Min: \$79.00 Max: \$115.00	\$113.85 Min: \$90.85 Max: \$132.25	\$148.50 Min: \$118.50 Max: \$172.50	\$173.25 Min: \$138.25 Max: \$201.25	\$247.50 Min: \$197.50 Max: \$287.50	Per Hour Minimum 2 hours
Other Social Support	\$99.00 Min: \$79.00 Max: \$115.00	\$113.85 Min: \$90.85 Max: \$132.25	\$148.50 Min: \$118.50 Max: \$172.50	\$173.25 Min: \$138.25 Max: \$201.25	\$247.50 Min: \$197.50 Max: \$287.50	Per Hour Minimum 2 hours
Group Social Support	\$39.00	\$44.85	\$58.50	\$68.25	\$97.50	Per Hour
Centre Based Activity Group	\$19.00	\$21.85	\$28.50	\$33.25	\$47.50	Per Hour

Transport

Services	Mon-Fri (8am-6pm)	Mon-Fri (After Hours)	Saturday	Sunday	Public Holiday	Unit
Direct Transport < 10km	\$15.00	\$15.00	\$15.00	\$15.00	\$15.00	Per Trip
Direct Transport 10-20km	\$30.00	\$30.00	\$30.00	\$30.00	\$30.00	Per Trip
Direct Transport 20-50km	\$50.00	\$50.00	\$50.00	\$50.00	\$50.00	Per Trip
Direct Transport > 50km	\$150.00	\$150.00	\$150.00	\$150.00	\$150.00	Per Trip



Everyday Living



Domestic Assistance



Meals

Domestic Assistance

Services	Mon-Fri (8am-6pm)	Mon-Fri (After Hours)	Saturday	Sunday	Public Holiday	Unit
General House Cleaning	\$99.00 Min: \$79.00 Max: \$115.00	\$113.85 Min: \$90.85 Max: \$132.25	\$148.50 Min: \$118.50 Max: \$172.50	\$173.25 Min: \$138.25 Max: \$201.25	\$247.50 Min: \$197.50 Max: \$287.50	Per Hour Minimum 2 hours
Laundry Services	\$99.00 Min: \$79.00 Max: \$115.00	\$113.85 Min: \$90.85 Max: \$132.25	\$148.50 Min: \$118.50 Max: \$172.50	\$173.25 Min: \$138.25 Max: \$201.25	\$247.50 Min: \$197.50 Max: \$287.50	Per Hour Minimum 2 hours
Shopping Assistance	\$99.00 Min: \$79.00 Max: \$115.00	\$113.85 Min: \$90.85 Max: \$132.25	\$148.50 Min: \$118.50 Max: \$172.50	\$173.25 Min: \$138.25 Max: \$201.25	\$247.50 Min: \$197.50 Max: \$287.50	Per Hour Minimum 2 hours

Meals

Services	Mon-Fri (8am-6pm)	Mon-Fri (After Hours)	Saturday	Sunday	Public Holiday	Unit
Meal Preparation	\$99.00 Min: \$79.00 Max: \$115.00	\$113.85 Min: \$90.85 Max: \$132.25	\$148.50 Min: \$118.50 Max: \$172.50	\$173.25 Min: \$138.25 Max: \$201.25	\$247.50 Min: \$197.50 Max: \$287.50	Per Hour Minimum 2 hours



INCLUSIVE PRICING

The price listed for each service includes all associated costs and reflects the total amount you will pay.

CANCELLATIONS

No fee will apply if you provide more than 24 business hours' notice to cancel a service. If notice is given less than 24 business hours before the scheduled start time, the **1-hour late cancellation fee** will be applied. If you cancel the service within the scheduled service hour, **full-service fee** will be charged.

HOURLY RATES

Our rates are inclusive of , without limitation, administrative costs, coordination costs, employee wages, PAYG tax, superannuation, workers compensation insurance, professional indemnity insurance, public liability insurance, payroll tax and our service charges.

MINIMUM HOURS

Refer to the pricing tables above to see services where minimum hours apply. A special loading fee may apply for services booked for less than 2 hours.

REVIEW OF FEES

These fees may be adjusted from time to time to reflect changes in labour costs, Aged Care Award, annual index rate and inflation rate, insurance premiums, government tax and levies, or other expenses related to regulatory changes. You will receive written notice at least four weeks before any new fees take effect.

GOOD AND SERVICES TAX (GST)

All the amounts stated above are subject to an additional 10% GST where applicable.

NEED ASSISTANCE

If you have any questions about the new SAH pricing, please contact our team on 02 7252 2330 or email us at finance@wecarewellness.com.au

