



RESPIRE CARE



Compassionate people, dedicated to care

HALL & PRIOR
Health & Aged Care Group



*We look forward
to welcoming
you to our home*

◇◇◇◇◇◇◇◇◇◇

Understanding

RESPITE CARE



Caring for a friend or family member is very rewarding, but it can also be challenging at times.

Respite care is a short-term care arrangement that is designed to give you and your loved one a break for a short time.

Whatever the reason, respite care ensures that you and your loved one will be well cared for until they are ready to return home

What is
RESPITE CARE



Respite care is short-term
residential aged care



Based on bed availability, it can be booked in advance for different lengths of time, and can be arranged at short notice in an emergency. The maximum time that respite can be taken is 63 days in a financial year.

Even though respite care is short-term care, you can rest assured that your loved one will receive the highest quality care in a Hall & Prior home. They will receive assistance with daily tasks such as showering and dressing, and enjoy their choice of delicious, nutritionally balanced meals. They will be invited to join in with the home's daily activities program, and will have access to our allied health team which includes a geriatrician, physiotherapist, speech pathologist, registered nurses, occupational therapists, dieticians and other visiting health professionals.

*10 Homes to
choose from in
NSW*



Where can I access **RESPIRE CARE**




Respite care is available at all Hall & Prior homes. This includes 10 homes throughout New South Wales (located in Arncliffe, Greenwich, Lane Cove, Mosman, Rockdale, Vacluse, Hurstville, Fairfield, Burwood Heights and Point Clare).

The contact details for each home are provided on the back of this brochure and we welcome you to contact the home of your choice directly for further information.

What if the home I choose doesn't have a place available?

If the home you choose doesn't have a place available, the Director of Nursing will help you find a place for your loved one at another Hall & Prior home close by.



*Your choices on
the personal care
you receive are
important to us.*

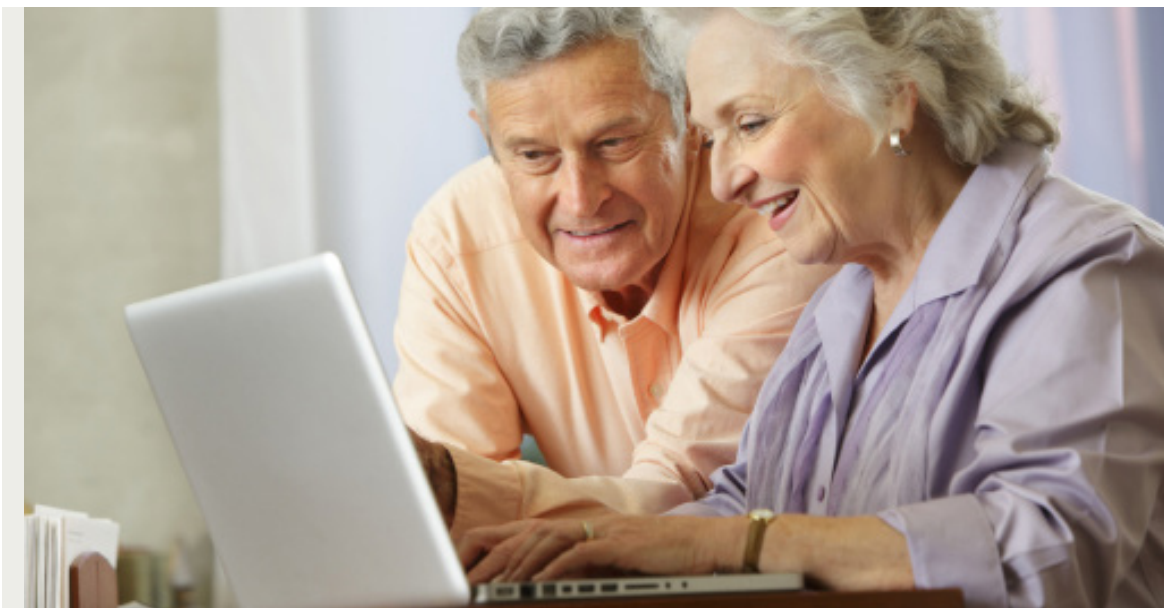


HOW DO I ARRANGE RESPITE CARE

All Hall & Prior homes specialise in providing high-level care. To receive respite care at a Hall & Prior home, your loved one will need to be assessed as eligible by an Aged Care Assessment Team (ACAT). ACATs are funded by the Australian Government to provide free assessments. Your doctor, health centre or local hospital will be able to refer you to an ACAT near you.

Once you have been assessed as eligible, you can contact the home of your choice to arrange your respite stay.





HOW MUCH DOES RESPITE CARE COST

The daily fee for respite care is set by the Australian Government. The Director of Nursing at the home of your choice will be able to provide you with a full outline of these fees and can discuss these with you at any time.

You may also be asked to pay a booking fee when you organise respite care. This is not an extra fee; it is a prepayment of your respite care fees, and cannot exceed a full week's fee or 25% of the cost for the entire stay, whichever is lower.

About **HALL & PRIOR**



Over the past 20 years, Hall & Prior has become a leading Australian aged care provider with 24 residential aged care homes in Western Australia and New South Wales. We care for more than 1,200 older people in both residential and community settings.

Our homes provide residential high care, respite care, palliative care and dementia support, and our experienced registered nurses and carers provide round-the-clock care 24 hours a day, seven days a week.

Each person we care for at Hall & Prior is treated with respect and dignity, and is given the opportunity to enjoy choices in accommodation, lifestyle and health services, and the highest quality care.



*Compassionate
people, dedicated to
care*

Respite care at Hall & Prior

We understand that moving into an aged care home, even if it is only for a short stay, involves a lot of change for you and your loved one with new routines, new people and a new environment to adjust to. To support you during this time and to ensure a smooth transition, our staff will take the time to discuss these changes with you.

Our rooms are furnished and decorated, but we encourage you to bring personal belongings such as photographs, pictures and soft furnishings to help your loved one feel at home.

Your loved one will be cared for as a permanent resident during their stay. They will be invited to join in activities and go on outings, choose their meals, and have access to our health and therapy services as well as our laundry service.

We will always take time to listen and respond to any questions or concerns that you or your loved one may have. Our Directors of Nursing are very approachable and are available to discuss the care of your loved one with you at any time.

Above all, you will find it reassuring to know that we have the experience and commitment to provide your loved

BECOMING A PERMANENT RESIDENT

All Hall & Prior homes specialise in providing high-level care. Should you wish to become a permanent resident following your stay, please speak to your Director of Nursing regarding your care needs, the transition process, and the cost of your care. The cost of residential aged care is dependent on your circumstances and is different for everyone. The government pays a supplement for residents who are assessed as eligible through a combined assets and income assessment. A full explanation of these costs is also available on the Hall & Prior website.



FOR MORE INFORMATION

 Contact the Hall & Prior aged care home of your choice

NSW OFFICE	9427 8978	VAUCLUSE VAUCLUSE	9337 3235
ALLOA ARNCLIFFE	9567 6375	FAIRFIELD FAIRFIELD	9728 1144
CAROLINE CHISHOLM LANE COVE	9428 2466	CLOVER LEA BURWOOD HEIGHTS	9747 1911
GLENWOOD GREENWICH	9436 1707	SHANGRI-LA HURSTVILLE	9580 4333
MENAVILLE ROCKDALE	9567 3641	AUBREY DOWNER POINT CLARE	4324 2068
SIRIUS COVE MOSMAN	9960 7555	GRAFTON GRAFTON	6642 3255

If you would like more detailed information, the Department of Social Services My Aged Care website is a comprehensive resource. Visit www.myagedcare.gov.au or call 1800 200 422

 infoNSW@hallprior.com.au

hallprior.com.au